



主要用途

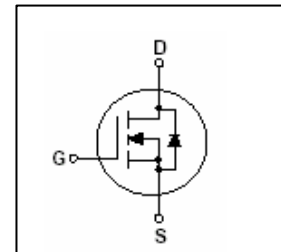
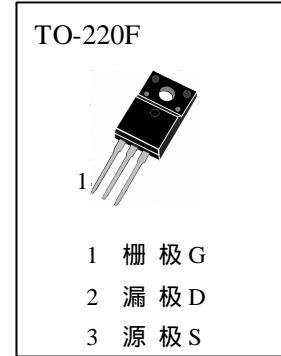
高压高速电源开关。

极限值 ($T_a=25$)

T_{stg} ——贮存温度.....	-55~150
T_j ——结温.....	150
V_{DSS} ——漏极—源极电压.....	200V
V_{DGR} —— 漏极—栅极电压($R_{GS}=1M$)	500V
V_{GS} ——栅极—源极电压.....	$\pm 30V$
I_D ——*漏极电流 ($T_c=25$)	9.0A
P_D ——耗散功率 ($T_c=25$)	38W

*漏极电流受最大结温限制

外形图及引脚排列



电参数 ($T_a=25$)

参数符号	符号说明	最小值	典型值	最大值	单位	测试条件
BV_{DSS}	漏—源极击穿电压	200			V	$I_D=250 \mu A, V_{GS}=0V$
I_{DSS}	零栅压漏极电流			10	μA	$V_{DS}=200V, V_{GS}=0$
I_{GSS}	栅极泄漏电流			± 100	nA	$V_{GS}=\pm 30V, V_{DS}=0V$
$V_{GS(th)}$	栅—源极开启电压	2.0		4.0	V	$V_{DS}=V_{GS}, I_D=250 \mu A$
$R_{DS(on)}$	漏—源极导通电阻		0.34	0.4	?	$V_{GS}=10V, I_D=4.5A$
g_{fs}	正向跨导		7.05		S	$V_{DS}=40V, I_D=4.5A$
C_{iss}	输入电容		550	720	pF	} $V_{DS}=25V, V_{GS}=0, f=1MHz$
C_{oss}	输出电容		85	110	pF	
C_{rSS}	反向传输电容		22	29	pF	
$t_{d(on)}$	导通延迟时间		11	30	nS	} $V_{DD}=100V,$ $I_D=9A$ (峰值) $R_G=25$
t_r	上升时间		70	150	nS	
$t_{d(off)}$	断开延迟时间		60	130	nS	
t_f	下降时间		65	140	nS	} $V_{DS}=0.8V_{DSS}$ $V_{GS}=10V$ $I_D=9.0A$
Q_g	栅极总电荷		22	29	nC	
Q_{gs}	栅极—源极电荷		3.6		nC	
Q_{gd}	栅极—漏极电荷		10.2		nC	
I_s	源极—漏极二极管正向电流			9.0	A	} $I_s=9.0A, V_{GS}=0$
V_{SD}	源极—漏极二极管导通电压			1.5	V	
$R_{th(j-c)}$	热阻			3.33	/W	结到外壳



典型特性曲线

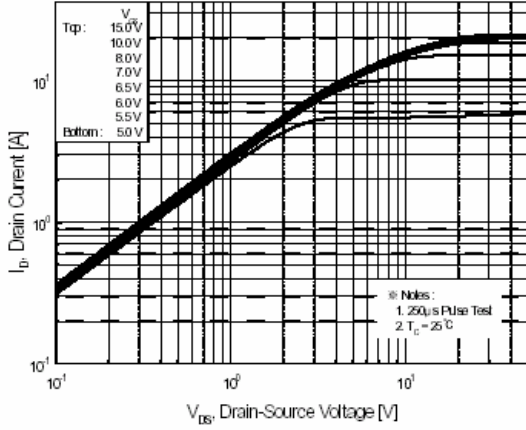


Figure 1. On-Region Characteristics

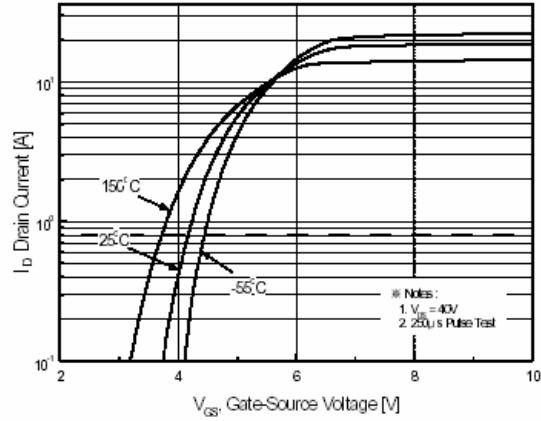


Figure 2. Transfer Characteristics

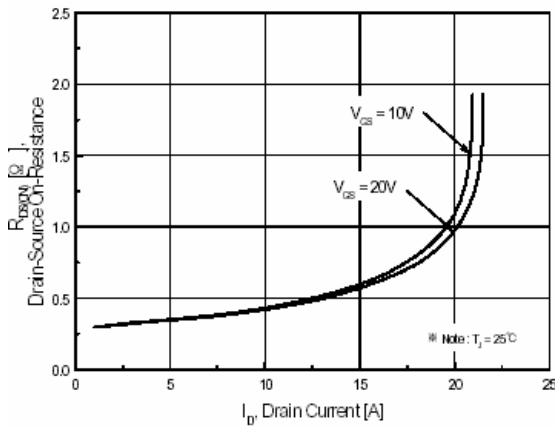


Figure 3. On-Resistance Variation vs Drain Current and Gate Voltage

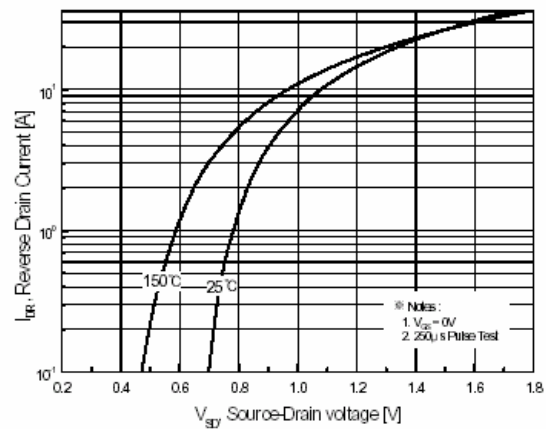


Figure 4. Body Diode Forward Voltage Variation with Source Current and Temperature

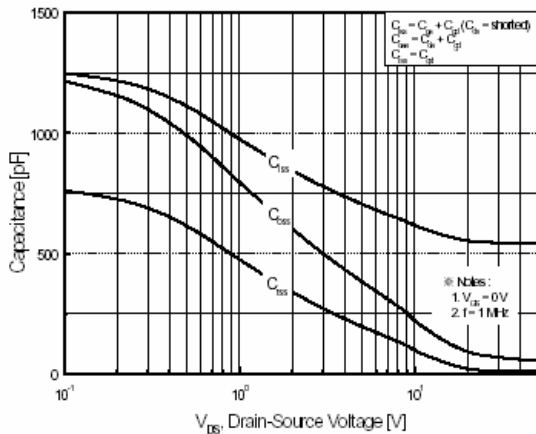


Figure 5. Capacitance Characteristics

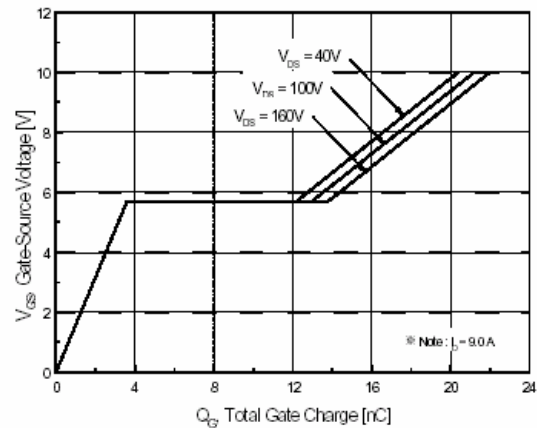


Figure 6. Gate Charge Characteristics



典型特性曲线

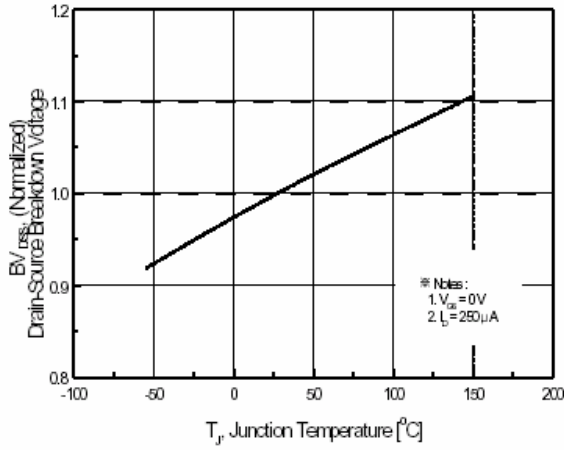


Figure 7. Breakdown Voltage Variation vs Temperature

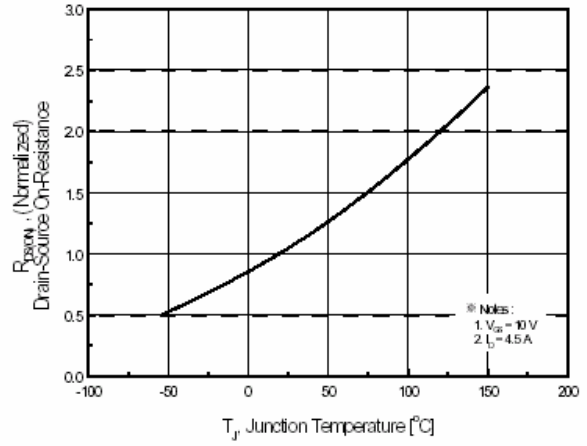


Figure 8. On-Resistance Variation vs Temperature

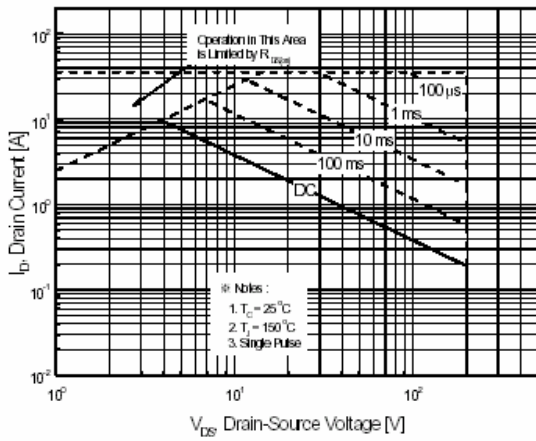


Figure 9 Maximum Safe Operating Area

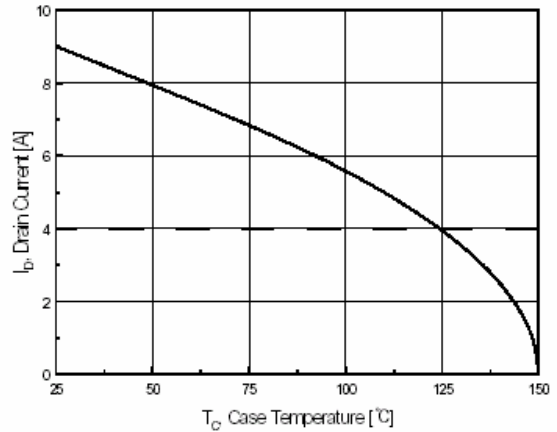


Figure 10. Maximum Drain Current vs Case Temperature

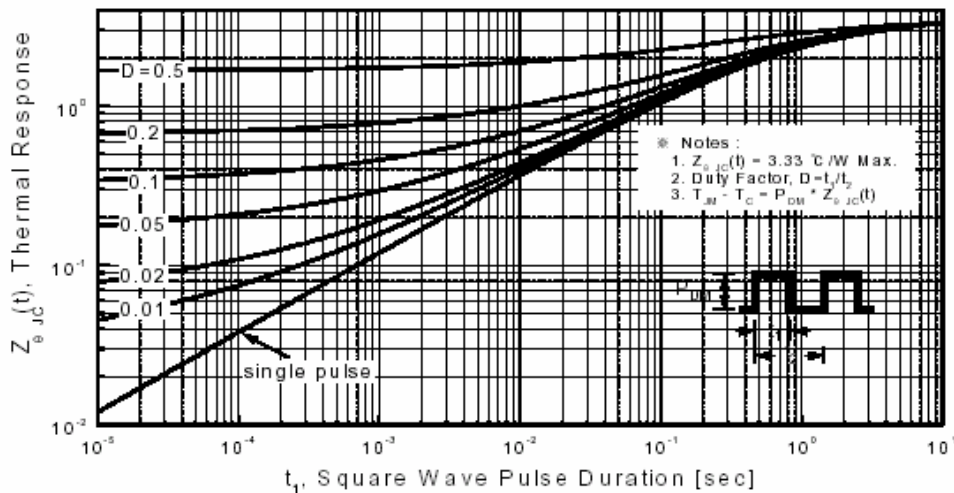
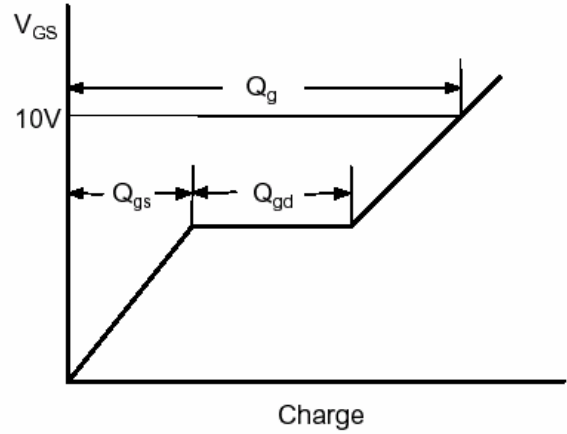
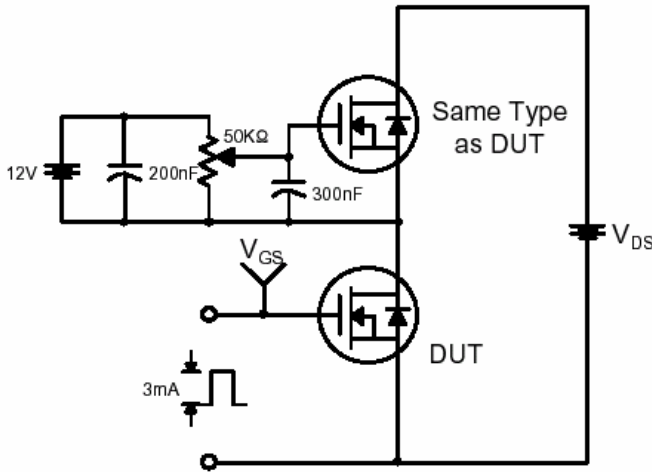


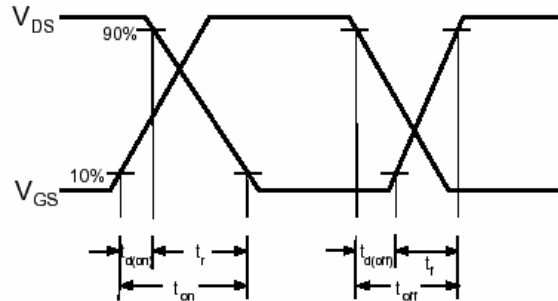
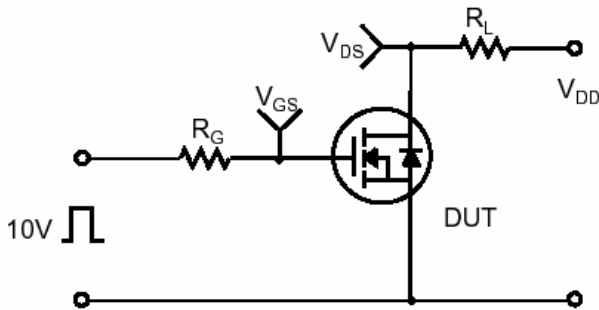
Figure 11 Transient Thermal Response Curve



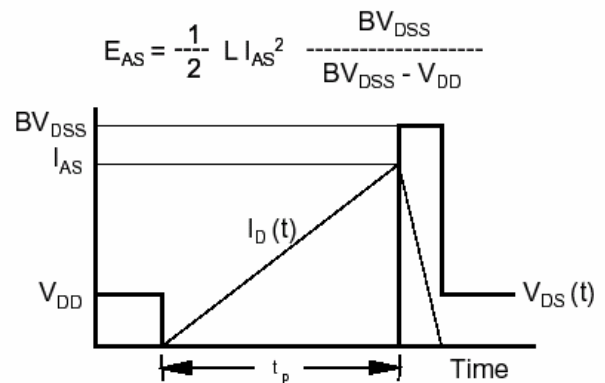
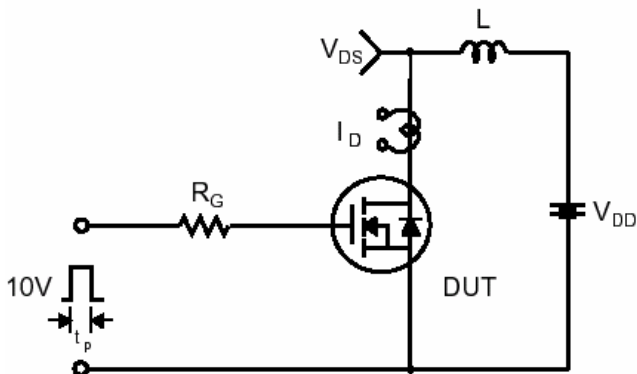
Gate Charge Test Circuit & Waveform



Resistive Switching Test Circuit & Waveforms



Unclamped Inductive Switching Test Circuit & Waveforms





Peak Diode Recovery dv/dt Test Circuit & Waveforms

